



Test Report

Report No : BSTDG1501315222RR-4 Date: Jan. 06, 2015

Page 1 of 6

Applicant : MAKO SEMICONDUCTOR CO., LIMITED

Address : Flat B07 Floor23, Hover Industrial Building, No. 26-38 Kwai Cheong Road, N.T,
Hong Kong.

The following sample(s) was /were submitted and identified on behalf of the clients as :

Sample Name : Chip semiconductor (Diodes, transistors, FETs, thyristors,
Darlington transistors, single-junction transistor, LED,
TVS, ESD, and contain semiconductor manifold, IC)



Trade Name : 美科半導體

Sample Model : SOT/SOD/DO-214/LL/DO/TO/LBS/MBS/DB/0402/0603/0805/1206
/1210 ALL SERIES

Sample Received Date : Jan. 03, 2015

Testing Period : Jan. 03, 2015 To Jan. 06, 2015

Test Requested : selected test(s) in the selected parts as requested by client with
2011/65/EU.

Test Method : Please refer to next page(s).

Test Result : Please refer to next page(s).

Signed for and on behalf of



Andy Zheng/ Technical Director

This report shall not be altered, increased or deleted. The results shown in this test report refer only to the sample(s) tested. Without written approval of BST, this test report shall not be copied except in full and published as advertisement. BST Physical & Chemical Lab.



Test Report

Report No : BSTDG1501315222RR-4 Date: Jan. 06, 2015

Page 2 of 6

Sample Description:

No.	Description	Name
1	Metal	Pin
2	Plastic	Package Body

Test Result(No.1):

Test Item(s)	Unit	Test Method (Reference)	Result	MDL	Limit
Cadmium(Cd)	mg/kg	IEC 62321-5:2013, ICP-AES	N.D.	2	100
Lead(Pb)	mg/kg	IEC 62321-5:2013, ICP-AES	10	2	1000
Mercury(Hg)	mg/kg	IEC 62321-4:2013, ICP-AES	N.D.	2	1000
Hexavalent Chromium(CrVI)	mg/kg	IEC 62321:2008, UV-Vis	N.D.	2	1000
Sum of PBBs	mg/kg	IEC 62321:2008, GC-MS	--	--	1000
Monobromobiphenyl	mg/kg	IEC 62321:2008, GC-MS	--	5	--
Dibromobiphenyl	mg/kg	IEC 62321:2008, GC-MS	--	5	--
Tribromobiphenyl	mg/kg	IEC 62321:2008, GC-MS	--	5	--
Tetrabromobiphenyl	mg/kg	IEC 62321:2008, GC-MS	--	5	--
Pentabromobiphenyl	mg/kg	IEC 62321:2008, GC-MS	--	5	--
Hexabromobiphenyl	mg/kg	IEC 62321:2008, GC-MS	--	5	--
Heptabromobiphenyl	mg/kg	IEC 62321:2008, GC-MS	--	5	--
Octabromobiphenyl	mg/kg	IEC 62321:2008, GC-MS	--	5	--
Nonabromobiphenyl	mg/kg	IEC 62321:2008, GC-MS	--	5	--
Decabromobiphenyl	mg/kg	IEC 62321:2008, GC-MS	--	5	--
Sum of PBDEs	mg/kg	IEC 62321:2008, GC-MS	--	--	1000
Monobromodiphenyl ether	mg/kg	IEC 62321:2008, GC-MS	--	5	--
Dibromodiphenyl ether	mg/kg	IEC 62321:2008, GC-MS	--	5	--
Tribromodiphenyl ether	mg/kg	IEC 62321:2008, GC-MS	--	5	--
Tetrabromodiphenyl ether	mg/kg	IEC 62321:2008, GC-MS	--	5	--
Pentabromodiphenyl ether	mg/kg	IEC 62321:2008, GC-MS	--	5	--
Hexabromodiphenyl ether	mg/kg	IEC 62321:2008, GC-MS	--	5	--
Heptabromodiphenyl ether	mg/kg	IEC 62321:2008, GC-MS	--	5	--
Octabromodiphenyl ether	mg/kg	IEC 62321:2008, GC-MS	--	5	--
Nonabromodiphenyl ether	mg/kg	IEC 62321:2008, GC-MS	--	5	--
Decabromodiphenyl ether	mg/kg	IEC 62321:2008, GC-MS	--	5	--

This report shall not be altered, increased or deleted. The results shown in this test report refer only to the sample(s) tested. Without written approval of BST, this test report shall not be copied except in full and published as advertisement. BST Physical & Chemical Lab.



Test Report

Report No : BSTDG1501315222RR-4 Date: Jan. 06, 2015

Page 3 of 6

Test Result(No.2):

Test Item(s)	Unit	Test Method (Reference)	Result	MDL	Limit
Cadmium(Cd)	mg/kg	IEC 62321-5:2013, ICP-AES	N.D.	2	100
Lead(Pb)	mg/kg	IEC 62321-5:2013, ICP-AES	N.D.	2	1000
Mercury(Hg)	mg/kg	IEC 62321-4:2013, ICP-AES	N.D.	2	1000
Hexavalent Chromium(CrVI)	mg/kg	IEC 62321:2008, UV-Vis	N.D.	2	1000
Sum of PBBs	mg/kg	IEC 62321:2008, GC-MS	N.D.	--	1000
Monobromobiphenyl	mg/kg	IEC 62321:2008, GC-MS	N.D.	5	--
Dibromobiphenyl	mg/kg	IEC 62321:2008, GC-MS	N.D.	5	--
Tribromobiphenyl	mg/kg	IEC 62321:2008, GC-MS	N.D.	5	--
Tetrabromobiphenyl	mg/kg	IEC 62321:2008, GC-MS	N.D.	5	--
Pentabromobiphenyl	mg/kg	IEC 62321:2008, GC-MS	N.D.	5	--
Hexabromobiphenyl	mg/kg	IEC 62321:2008, GC-MS	N.D.	5	--
Heptabromobiphenyl	mg/kg	IEC 62321:2008, GC-MS	N.D.	5	--
Octabromobiphenyl	mg/kg	IEC 62321:2008, GC-MS	N.D.	5	--
Nonabromobiphenyl	mg/kg	IEC 62321:2008, GC-MS	N.D.	5	--
Decabromobiphenyl	mg/kg	IEC 62321:2008, GC-MS	N.D.	5	--
Sum of PBDEs	mg/kg	IEC 62321:2008, GC-MS	N.D.	--	1000
Monobromodiphenyl ether	mg/kg	IEC 62321:2008, GC-MS	N.D.	5	--
Dibromodiphenyl ether	mg/kg	IEC 62321:2008, GC-MS	N.D.	5	--
Tribromodiphenyl ether	mg/kg	IEC 62321:2008, GC-MS	N.D.	5	--
Tetrabromodiphenyl ether	mg/kg	IEC 62321:2008, GC-MS	N.D.	5	--
Pentabromodiphenyl ether	mg/kg	IEC 62321:2008, GC-MS	N.D.	5	--
Hexabromodiphenyl ether	mg/kg	IEC 62321:2008, GC-MS	N.D.	5	--
Heptabromodiphenyl ether	mg/kg	IEC 62321:2008, GC-MS	N.D.	5	--
Octabromodiphenyl ether	mg/kg	IEC 62321:2008, GC-MS	N.D.	5	--
Nonabromodiphenyl ether	mg/kg	IEC 62321:2008, GC-MS	N.D.	5	--
Decabromodiphenyl ether	mg/kg	IEC 62321:2008, GC-MS	N.D.	5	--

- Note:**
1. mg/kg= ppm
 2. N.D.= No Detection(<MDL)
 3. MDL = Method Detection Limit
 4. -- = No Testing

This report shall not be altered, increased or deleted. The results shown in this test report refer only to the sample(s) tested. Without written approval of BST, this test report shall not be copied except in full and published as advertisement. BST Physical & Chemical Lab.



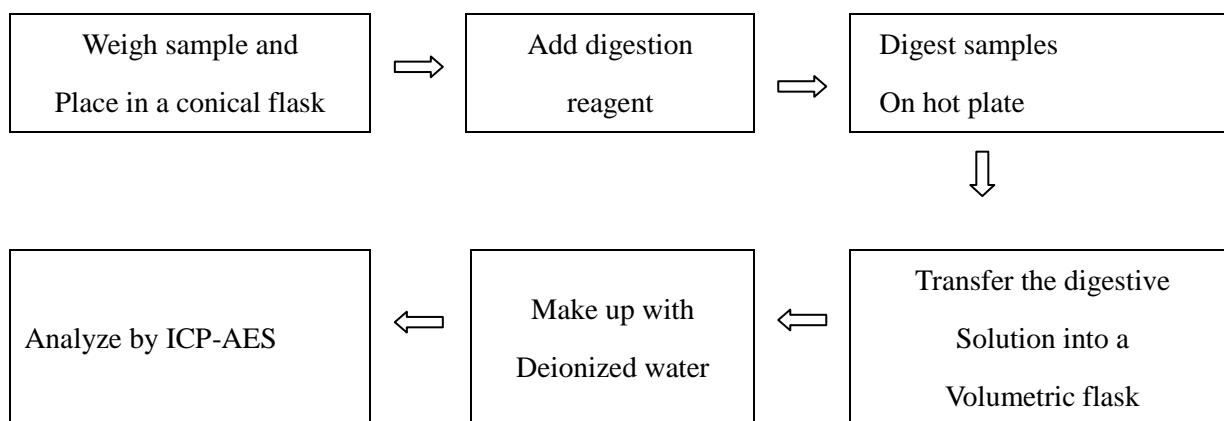
Test Report

Report No : BSTDG1501315222RR-4 Date: Jan. 06, 2015

Page 4 of 6

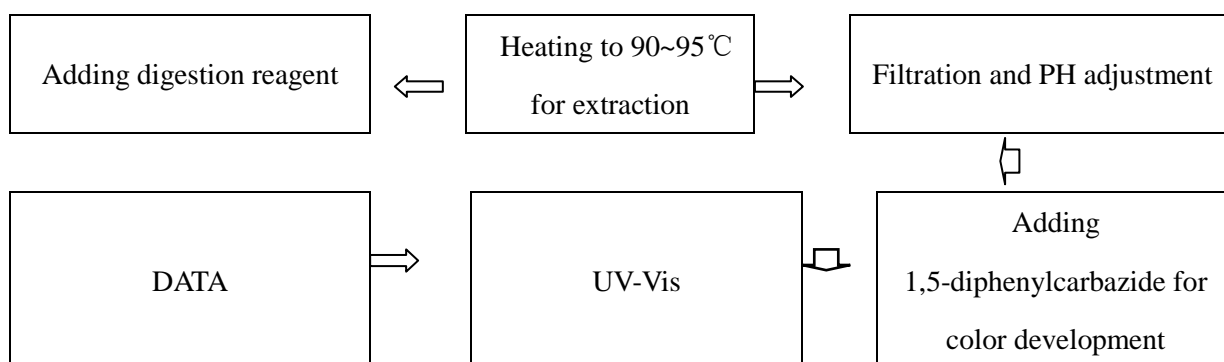
Test Process:

1. Test for Cd/Pb Content

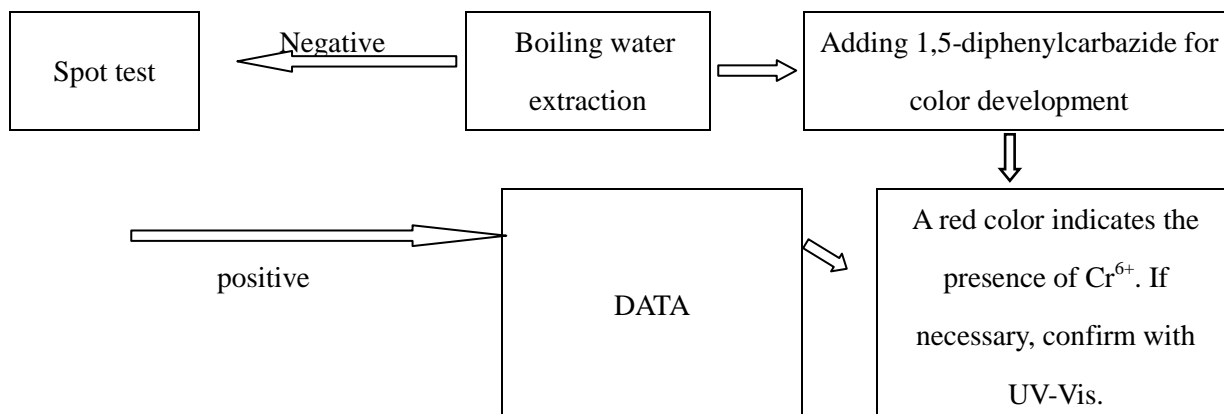


2. Test for Chromium(VI) Content

Nonmetallic material



Metallic material



This report shall not be altered, increased or deleted. The results shown in this test report refer only to the sample(s) tested. Without written approval of BST, this test report shall not be copied except in full and published as advertisement. BST Physical & Chemical Lab.

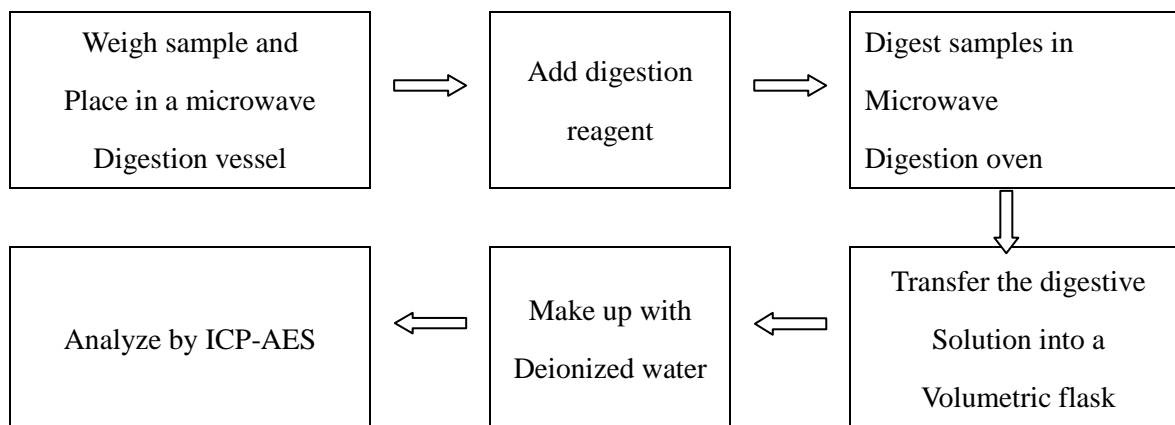


Test Report

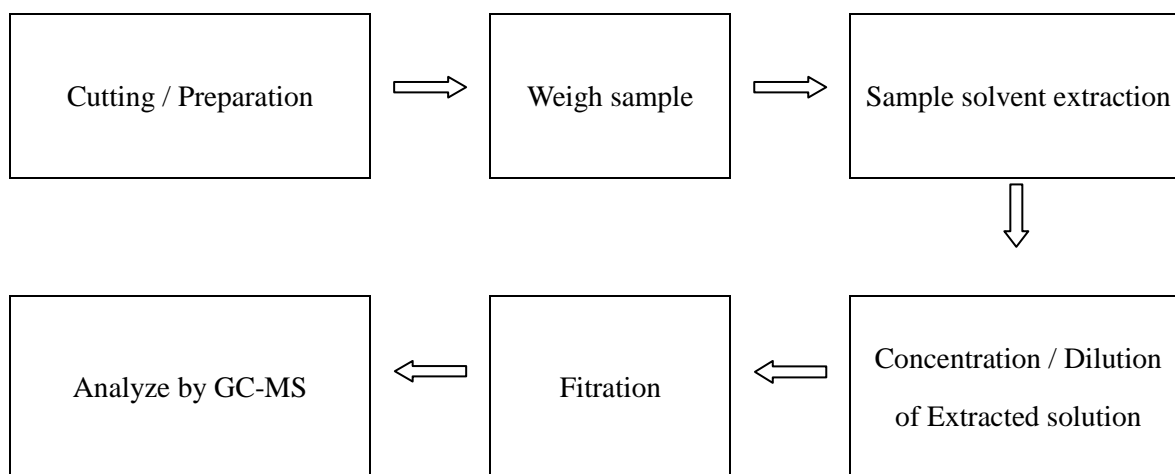
Report No : BSTDG1501315222RR-4 Date: Jan. 06, 2015

Page 5 of 6

3. Test for Hg Contents



4. Test for PBBs, PBDES



This report shall not be altered, increased or deleted. The results shown in this test report refer only to the sample(s) tested. Without written approval of BST, this test report shall not be copied except in full and published as advertisement. BST Physical & Chemical Lab.

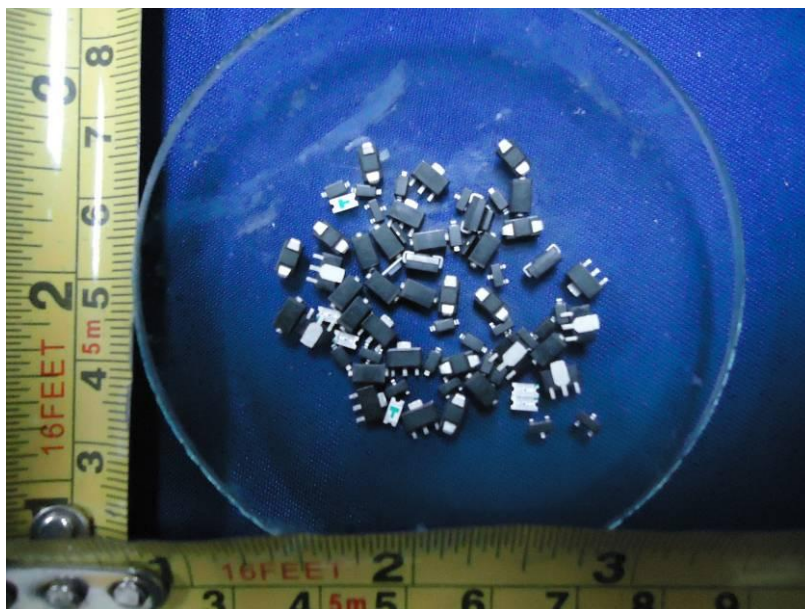


Test Report

Report No : BSTDG1501315222RR-4 Date: Jan. 06, 2015

Page 6 of 6

Sample Photo:



*** End of Report ***

This report shall not be altered, increased or deleted. The results shown in this test report refer only to the sample(s) tested. Without written approval of BST, this test report shall not be copied except in full and published as advertisement. BST Physical & Chemical Lab.

Dongguan BST Testing Co., Ltd.

A1201-1203 Xinsanqi Of Dongbao Road, Dongcheng District, Tel:400-880-2056 Fax:86-769-23020106
Dongguan, Guangdong, China E-mail:christina@bst-lab.com Http://www.bst-lab.com Complaints hotline:86-755-26747756